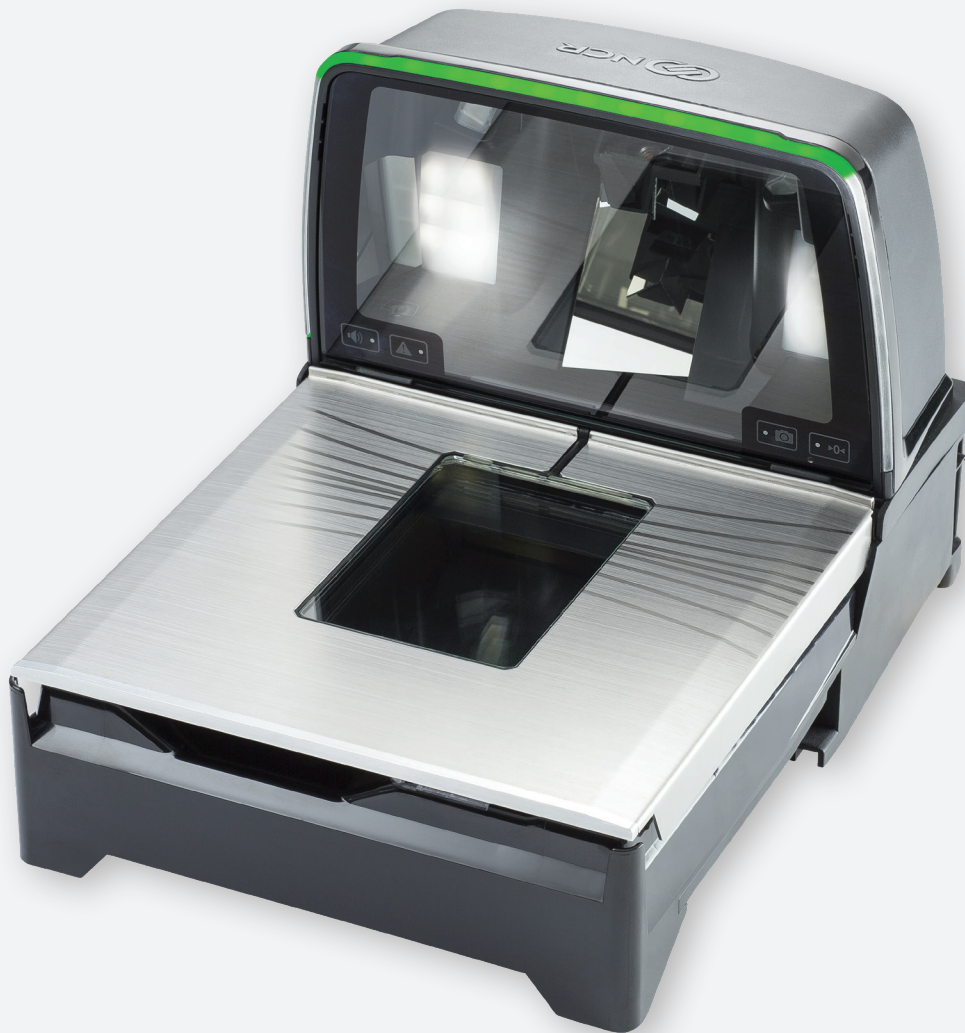


# NCR REALSCAN™ 79E

HIGH PERFORMANCE BI-OPTIC IMAGING  
DESIGNED FOR ASSISTED AND SELF-CHECKOUT



## INCREASE THROUGHPUT

The NCR RealScan 79e is a high performance bi-optic imager that provides 6-sided scanning capability with an excellent first-pass read rate. It also supports multiple symbologies, including 1D, 2D, mobile bar codes, and Digimarc, and it is available in different lengths to accommodate a variety of checkstand configurations.

It's ideal for use in traditional checkout lanes or self-checkout. Its intuitive ScanAdvisor light bar provides cashiers and consumers with instant visual feedback when items are successfully scanned.

For more information, visit [ncr.com](http://ncr.com), or email [retail@ncr.com](mailto:retail@ncr.com).



## ENHANCE THE SHOPPER EXPERIENCE

---

The RealScan 79e supports the NCR Picklist Assist software\* which is designed to alleviate the hassle of manually searching through an entire PLU list to find the correct code. This separately licensed software relies on computer vision technologies with cameras built into the scanner to identify items as they are placed on the scale and presents the shopper with a short list of most likely items based on color, weight, and other characteristics.

The shopper can quickly select the correct PLU code, which helps improve accuracy and efficiency to enhance the checkout experience. Machine learning continually improves suggestions over time.

The RealScan 79e also offers optional connectivity for a remote consumer-facing scanner, letting shoppers scan physical or digital coupons or loyalty cards simultaneously while the cashier is scanning.

## HELP MINIMIZE SHRINK

---

The RealScan 79e also supports NCR's Produce Assurance\* software which uses advanced imaging analytics to detect item switching. For example, the software can detect a user entering a product code for a low-price item, such as bananas, but placing a higher priced item on the scale, such as meat. A silent alert will

be sent to an attendant at self-checkout or a front-end manager, giving them the opportunity to verify and correct the situation if necessary. This can help reduce shrink at the front end. Our Produce Guard feature is another way to minimize shrink, and help reduce loss from oversized items being placed outside the scale's weighing surface.

## OPTIMIZE THE SCAN ZONE

---

Not only does the RealScan 79e have six-sided all-imaging scan capability with aggressive top-down performance, but it features the largest imaging scan zone in its class. Increased performance and high first pass read rates

are achieved through the use of NCR's PACESETTER™ technology which can count, grade, and repair problem bar codes.

## REDUCE TRAINING FOR CASHIERS

---

The RealScan 79e includes ScanDoctor which provides voice feedback, so your cashiers not only see a simple error code when there is an issue, but also hear a friendly

reassuring voice guiding them through the process, and a suite of tools is available for managing the scanner.

\*Optional software available with NCR FastLane SelfServ™ Checkout



## KEY FEATURES

- All imaging 1D, 2D, mobile scanning, and Digimarc-enabled
- Largest scan zone in its class with 7-inch tower and 6-sided scanning
- Third party scale integration available
- Optional NCR Produce Guard shield to help minimize loss from oversized produce that might otherwise extend beyond the scale footprint
- Enables NCR Produce Assurance software to help detect item switching and control shrink; licensed separately with NCR FastLane SelfServ™ Checkout
- Supports NCR Picklist Assist to present shoppers with a list of most likely items based on color, weight, and other characteristics; licensed separately with NCR FastLane SelfServ™ Checkout





# TECHNICAL SPECIFICATIONS

## PRODUCT DIMENSIONS

- Height (above counter) 17.78 cm (7 in)
- Width: 29.20 cm (11.5 in)
- Depth (below counter): 10.16 cm (4 in)
- Length:
  - Compact Scanner: 35.3 cm (13.9 in)
  - Mid-size Scanner/Scale: 39.9 cm (15.7 in)
  - Full-size Scanner/Scale: 50.8 cm (20 in)

## IMAGING TECHNOLOGY

- Type: Multiple CMOS Array Imager
- Illumination: Multiple diffused PureWhite LED
- Scan zone: All 6 sides/720° with edge-to-edge tower coverage

## SCALE CAPACITY

- Scale Capacity:
  - Single Interval: 15 kg in 0.005 kg increment (30 lbs in 0.01 lb increment)
- Maximum static weight: 136kg (300 lbs)
- Price computing scale options available

## CONNECTIVITY

- RS-232, USB (NCR and IBM/POS), IBM RS-485
- Auxiliary ports: RS232 and 2 USB (Type A) ports
- EAS interlock ports
- Scale display port

## SYMBOLOGIES

- UPC/EAN with two-digit and five-digit add-on symbols
- Code 128
- Code 39 (3 of 9)
- Interleaved 2 of 5
- Codabar
- Italian Pharmacode
- GS1 DataBar™ (RSS): DataBar Omnidirectional, Stacked Omnidirectional, Expanded, Expanded Stacked
- PDF417
- Micro PDF417
- QR Code and Micro QR Code
- Aztec
- Maxicode
- Data Matrix
- EAN Composite
- Watermark: Digimarc-enabled

## WINDOW MATERIALS

- Vertical window: Shatter-proof tempered glass
- Lower horizontal: Hurricane glass
- Horizontal top plate: ClearShield™ glass or Sapphire glass

## ELECTRONIC ARTICLE

### SURVEILLANCE (EAS)

- Option for Sensormatic® EAS interlock and deactivation coil
- Option for Checkpoint® EAS interlock and integrated antenna
- Option for Nedap® EAS interlock and integrated antenna

### POWER MANAGEMENT

- 12V power supply (90–264VAC/47–63Hz)
- 12V terminal power option over Powered USB

### PERIPHERALS AND ACCESSORIES

- Single or dual scale displays
- Optional connectivity for Remote Consumer Scanner (RCS) for flexibility at the checkstand

## WHY NCR?

NCR Corporation (NYSE: NCR) is a leader in omni-channel solutions, turning everyday interactions with businesses into exceptional experiences. With its software, hardware, and portfolio of services, NCR enables nearly 700 million transactions daily across retail, financial, travel, hospitality, telecom and technology, and small business. NCR solutions run the everyday transactions that make your life easier.

NCR is headquartered in Atlanta, Ga., with over 30,000 employees and does business in 180 countries. NCR is a trademark of NCR Corporation in the United States and other countries.

NCR continually improves products as new technologies and components become available. NCR, therefore, reserves the right to change specifications without prior notice.

All features, functions and operations described herein may not be marketed by NCR in all parts of the world. Consult your NCR representative or NCR office for the latest information.

NCR RealScan™ is a registered trademark of NCR Corporation in the United States and/or other countries. All brand and product names appearing in this document are trademarks, registered trademarks or service marks of their respective holders.

© 2018 NCR Corporation Patents Pending

051118-1118

[ncr.com](http://ncr.com)

